



**ACME MANUFACTURING CORP.**  
6532 TOWER LANE, CLAREMORE, OK. 74019

ENGINEERED PRODUCTS BY CRAFTSMEN

## Pipe Box Assembly Curb Type PB-1, PB-2 & PB-3

### STANDARD FEATURES

Shell and base plate constructed of 18 ga. galv steel with continuous welded seams for water tightness and extra strength.

Lined with 1½" fiberglass fire proof thermal insulation.

Internal angle reinforcing.

Welds coated with chrome enamel.

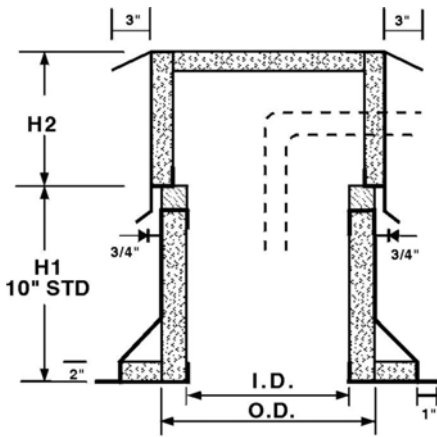
3" cant on PB-1 & PB-2.

Raised cant for deck insulation on PB-1.

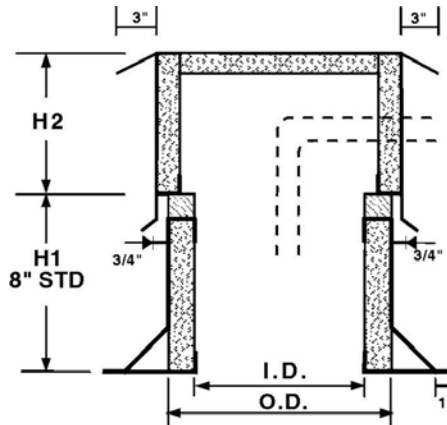
Factory installed wood nailer.

Pipe Box constructed of 20 ga. galv. steel with 1" rigid insulation.

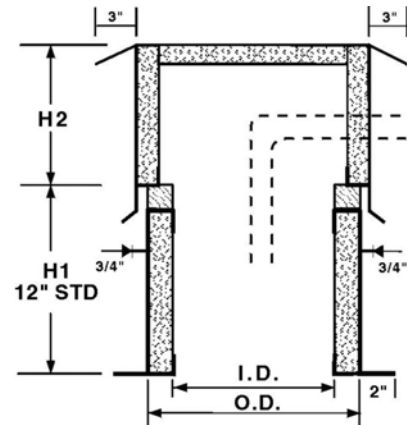
PROJECT	
LOCATION	
ARCHITECT	
ENGINEER	
CONTRACTOR	
SUBMITTED BY	
DATE	PO#



Model PB-1



Model PB-2



Model PB-3

### SPECIFICATIONS AND DIMENSIONS

REFERENCE	QUAN.	MODEL NO.	O.D.	I.D.	H <sup>1</sup>	H <sup>2</sup>