



ACME MANUFACTURING CORP.

6532 TOWER LANE, CLAREMORE, OK. 74019

ENGINEERED PRODUCTS BY CRAFTSMEN

Roof-Over-Flashing Curb With Raised Cant Base Type RFRC

STANDARD FEATURES

Constructed of 18 ga. galv. steel with continuous welded seams and integral base plate for water tightness and extra strength.

Utilizes a raised cant to accommodate roofs having extra insulation above the roof deck. Standard rise is 1½" with a maximum rise of 4".

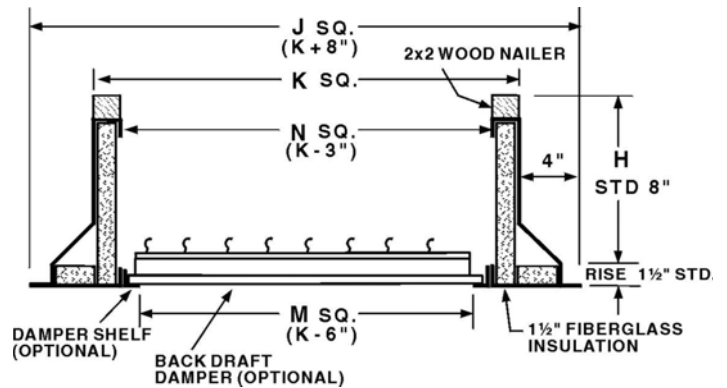
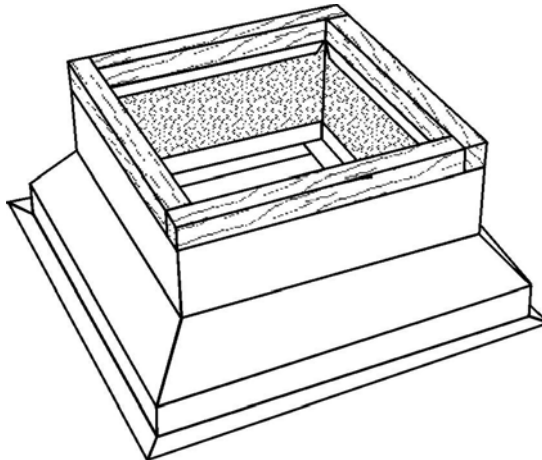
Large 3" built-in 45° raised cant to accommodate roofing to top of curb. Welded corners have mitered cants for better lay of roofing materials at corners.

Lined with 1½" fiberglass sound attenuating thermal insulation.

2 x 2 wood nailer secured to top ledge of curb.

OPTIONS

- Constructed of .063" aluminum.
- Interior metal liner.
- Standard heights of 12, 14, 16, 18, 20, 24", or any special height.
- Raised cant up to 4".
- Damper shelf – standard or custom size opening.
- Back draft damper.
- Damper motor, 120, 240, or 480 vac.
- Protective or decorative coatings.
- Treated wood nailer.
- Heavy-gage construction.



PROJECT	
LOCATION	
ARCHITECT	
ENGINEER	
CONTRACTOR	
SUBMITTED BY	
DATE	PO#

SPECIFICATIONS AND DIMENSIONS

REFERENCE	QUAN.	MAT'L	K	N	M	H	RISE	OPTIONS